

Product Portfolio

- MSANs/DSLAMs
- DSL CPE
- Ethernet CPE
- Network extenders
- Active optical network
- Passive optical network
- 5G NR/4G LTE

2022

MSANs/DSLAMs

►Central MSANs

IES5217
14U 17-slot
Temperature-Hardened
Chassis MSAN

- Maximum 192x3-port vectoring VDSL density, 600-port Gigabit Ethernet density
- Flexible ACL, VLAN-aware DHCP, and anti-IP/MAC address spoofing to prevent malicious attacks
- Board-Level Vectoring (BLV) and System-Level Vectoring (SLV)
- Field-proven IGMP snooping and proxy for IPTV deployments
- Sophisticated OAM&P features
- Temperature-hardened for flexible installation

IES5212
8.3U 12-slot
Temperature-Hardened
Chassis MSAN

- Maximum 192x2-port vectoring VDSL density, 400-port Gigabit Ethernet density, or 160-port GPON density
- Flexible ACL, VLAN-aware DHCP, and anti-IP/MAC address spoofing to prevent malicious attacks
- Board-Level Vectoring (BLV) and System-Level Vectoring (SLV)
- Field-proven IGMP snooping and proxy for IPTV deployments
- Sophisticated OAM&P features
- Temperature-hardened for flexible installation

IES5206
Dual-Band
Temperature-Hardened
Chassis MSA

- Maximum 192-port vectoring VDSL density, 200-port Gigabit Ethernet density, 32-port GPON density, or 32-port XGS-PON density
- Supports symmetric XGS-PON for residential, cloud, and enterprise services
- Flexible ACL, VLAN-aware DHCP, and anti-IP/MAC address spoofing to prevent malicious attacks
- Board-Level Vectoring (BLV) and System-Level Vectoring (SLV)
- Field-proven IGMP snooping and proxy for IPTV deployments
- Sophisticated OAM&P features
- Temperature-hardened for flexible installation

IES4204
2U 4-slot
Temperature-Hardened
Chassis MSAN

- Maximum 96-port vectoring VDSL density, 80-port Gigabit Ethernet density, 32-port GPON density, or 16-port XGS-PON density
- Supports symmetric XGS-PON for residential, cloud, and enterprise services
- Flexible ACL, VLAN-aware DHCP, and anti-IP/MAC address spoofing to prevent malicious attacks
- Field-proven IGMP snooping and proxy for IPTV deployments
- Sophisticated OAM&P features
- Temperature-hardened for flexible installation

IES-6000
12.5U 17-slot
Temperature-Hardened
Chassis MSAN

- Maximum 1152-port VoIP density, 1152-port ADSL2+ density, 768-port ADSL2+ combo density, 768-port SHDL density, 768-port VDSL2 density, or 384-port Gigabit Ethernet density
- Flexible ACL, VLAN-aware DHCP, and anti-IP/MAC address spoofing to prevent malicious attacks
- Comprehensive QoS to enhance triple-play experience
- Field-proven IGMP snooping and proxy for IPTV deployments
- Sophisticated OAM&P features
- Temperature-hardened for flexible installation

►Central MSANs

IES-5112
8U 12-slot
Temperature-Hardened
Chassis MSAN

- Maximum 720-port ADSL2+ density, 480-port ADSL2+ combo density, 480-port SHDSL density, 480-port VDSL2 density, 720-port VoIP density, or 240-port Gigabit Ethernet density
- Flexible ACL, VLAN-aware DHCP, and anti-IP/MAC address spoofing to prevent malicious attacks
- Comprehensive QoS to enhance triple-play experience
- Field-proven IGMP snooping and proxy for IPTV deployments
- Sophisticated OAM&P features
- Temperature-hardened for flexible installation

IES-5106
5U 6-slot
Temperature-Hardened
Chassis MSAN

- Maximum 360-port ADSL2+ density, 240-port ADSL2+ combo density, 240-port SHDSL density, 240-port VDSL2 density, 360-port VoIP density, or 120-port Gigabit Ethernet density
- Flexible ACL, VLAN-aware DHCP, and anti-IP/MAC address spoofing to prevent malicious attacks
- Field-proven IGMP snooping and proxy for IPTV deployments
- Sophisticated OAM&P features
- Temperature-hardened for flexible installation

►Remote MSANs/Remote DSLAMs

IES4105
2U 5-slot
Temperature-Hardened
Chassis MSAN

- Maximum 128-port ADSL2+ density, 96-port VDSL2 density, or 256-port VoIP density
- Flexible ACL, VLAN-aware DHCP, and anti-IP/MAC address spoofing to prevent malicious attacks
- Field-proven IGMP snooping and proxy for IPTV deployments
- Sophisticated OAM&P features
- Temperature-hardened for flexible installation

IES-1000
1U 2-slot
Remote MSAN
and Line Cards

- Maximum 24-port ADSL2+ density or 32-port SHDSL density
- 2 Fast Ethernet interfaces for uplink
- Supports 802.1p QoS, priority queuing, 802.1q VLAN tag, and multicast
- 1U, DC/AC power, and built-in POTS splitter

VES1724-56B2
VES1724-55C
VES1724-58V
24-port
Temperature-Hardened
VDSL2 Box
DSLAM

- Maximum 24-port VDSL2 density (VES1724-56B2, VES1724-58V), 24-port VoIP density (VES1724-58V), or 24-port vectoring VDSL density (VES1724-55C)
- VDSL2 bonding and G.INP
- SIP and H.248 for smooth voice over IP migration (VES1724-58V)
- AC/DC dual-power with battery charge (VES1724-58V)
- Fanless design for energy-saving and energy-saving and extended product life (VES1724-56B2, VES1724-55C)
- Temperature-hardened for flexible installation

GES1316-FSA
GES1116-FSA
8/16-port
Temperature-Hardened
G-fast DPU

- G-fast with G.vectoring and VDSL2/35b fallback
- Multi-service interfaces including G.fast, VDSL2, GPON, and fiber-based GbE
- Field-proven IGMP snooping and proxy for IPTV deployments
- Sophisticated OAM&P features
- Temperature-hardened for flexible installation
- Fanless design for energy-saving and extended product life

GES2104-R55/A55
4-port
Environmental-Hardened
G-fast DPU

- G.fast with G.vectoring and VDSL2 fallback
- Multi-service interfaces including G.fast, VDSL2, GPON, and fiber-based GbE services
- Field-proven IGMP snooping and proxy for IPTV deployments
- Sophisticated OAM&P features
- Environmental-hardened for flexible installation
- Fanless design for energy-saving and extended product life

►Network Management

NetAtlas EMS
NetAtlas Element Management System

- Centralized, comprehensive management
- Intuitive Graphical User Interface (GUI)
- Up to 300 concurrent remote login clients
- Periodical configuration file backup
- Batch firmware upgrade and service provisioning
- OSS integration using XML/SOAP northbound interface supported

►VDSL IADs

DX5401-B0
Dual-Band
Wireless
AX6000 VDSL2
Gigabit IAD

- WiFi 6 (11ax) 4x4+4x4 for superior performance and coverage
- Zyxel MPro Mesh® Solutions (compliant with EasyMesh standards)
- SFP cage enables Gigabit active fiber (P2P) and GPON (P2M) deployments
- Remote management via TR-069 and TR-181 i2
- Zyxel-developed OPAL for superior flexibility and faster time-to-market
- VoIP SIP protocol with 3-way conference calls

DX3301-T0
Dual-Band
Wireless
AX1800 VDSL2
Gigabit IAD

- WiFi 6 (11ax) 2x2+2x2 for superior performance and coverage
- Zyxel MPro Mesh® Solutions (compliant with EasyMesh standards)
- Remote management via TR-069 and TR-181 i2
- Zyxel-developed OPAL for superior flexibility and faster time-to-market
- VoIP SIP protocol with 3-way conference calls
- Ecofriendly compact design for lower carbon emission

VMG8825-T50K
Dual-Band
Wireless
AC2400 VDSL2
Gigabit IAD

- Zyxel MPro Mesh® Solutions (compliant with EasyMesh standards)
- Remote management via TR-069 and TR-181 i2
- NAT, firewall with SPI and DoS for better security
- Zyxel-developed OPAL for superior flexibility and faster time-to-market
- VoIP SIP protocol with 3-way conference calls

VMG8623-T50B
Dual-Band
Wireless
AC1200 VDSL2
Gigabit IAD

- Zyxel MPro Mesh® Solutions (compliant with EasyMesh standards)
- NAT, firewall with SPI and DoS for better security
- Zyxel-developed OPAL for superior flexibility and faster time-to-market
- VoIP SIP protocol with 3-way conference calls
- Ecofriendly compact design for lower carbon emission

►VDSL gateways

DX3300-T0
Dual-Band
Wireless
AX1800 VDSL2
Gigabit Gateway

- WiFi 6 (11ax) 2x2+2x2 for superior performance and coverage
- Zyxel MPro Mesh® Solutions (compliant with EasyMesh standards)
- Remote management via TR-069 and TR-181 i2
- Zyxel-developed OPAL for superior flexibility and faster time-to-market
- Ecofriendly compact design for lower carbon emission

►Ethernet gateways

VMG3927-T50K
Dual-Band
Wireless AC2400
VDSL2 Gigabit Gateway

- Zyxel MPro Mesh® Solutions (compliant with EasyMesh standards)
- Remote management via TR-069 and TR-181 i2
- NAT, firewall with SPI and DoS for better security
- Zyxel-developed OPAL for superior flexibility and faster time-to-market

VMG3625-T50B
Dual-Band
Wireless AC1200
VDSL2 Gigabit Gateway

- Zyxel MPro Mesh® Solutions (compliant with EasyMesh standards)
- Remote management via TR-069 and TR-181 i2
- NAT, firewall with SPI and DoS for better security
- Zyxel-developed OPAL for superior flexibility and faster time-to-market
- Ecofriendly compact design for lower carbon emission

►Bridge

VMG4005-B50A/
VMG4005-B60A
VDSL2 17a
Bonding and
35b Single
Line Bridge

- VDSL2 17a bonding technology doubles the speed
- VDSL2 supports super vectoring of up to profile 35b
- TR-286 standard compliant for Metallic Line Testing (MELT) functionality
- Remote management via TR-069 and TR-181 i2
- Zyxel-developed OPAL for superior flexibility and faster time-to-market

Ethernet CPE

►Ethernet IADs

EX5501-B0
Dual-Band
Wireless
AX6000 Gigabit
Ethernet IAD

- WiFi 6 (11ax) 4x4+4x4 for superior performance and coverage
- Zyxel MPro Mesh® Solutions (compliant with EasyMesh standards)
- Zyxel-developed OPAL for superior flexibility and faster time-to-market
- VoIP SIP protocol with 3-way conference calls
- 2.5GbE WAN port for premium fiber-grade service
- Four 1GbE and one 2.5GbE LAN ports for optimized bandwidth utilization

EX5401-B0
Dual-Band
Wireless
AX6000 Gigabit
Ethernet IAD

- WiFi 6 (11ax) 4x4+4x4 for superior performance and coverage
- Zyxel MPro Mesh® Solutions (compliant with EasyMesh standards)
- SFP cage enables Gigabit active fiber (P2P) and GPON (P2M) deployments
- Remote management via TR-069 and TR-181 i2
- Zyxel-developed OPAL for superior flexibility and faster time-to-market
- VoIP SIP protocol with 3-way conference calls

EX3301-T0
Dual-Band
Wireless
AX1800 Gigabit
Ethernet IAD

- WiFi 6 (11ax) 2x2+2x2 for superior performance and coverage
- Zyxel MPro Mesh® Solutions (compliant with EasyMesh standards)
- Remote management via TR-069 and TR-181 i2
- Zyxel-developed OPAL for superior flexibility and faster time-to-market
- VoIP SIP protocol with 3-way conference calls
- Ecofriendly compact design for lower carbon emission

►Ethernet gateways

EX3300-T0
Dual-Band
Wireless AX1800
Gigabit Ethernet Gateway

- WiFi 6 (11ax) 2x2+2x2 for superior performance and coverage
- Zyxel MPro Mesh® Solutions (compliant with EasyMesh standards)
- Remote management via TR-069 and TR-181 i2
- Zyxel-developed OPAL for superior flexibility and faster time-to-market
- Ecofriendly compact design for lower carbon emission

EMG5723-T50K
Dual-Band
Wireless
AC2400 Gigabit
Ethernet IAD

- Zyxel MPro Mesh® Solutions (compliant with EasyMesh standards)
- Remote management via TR-069, TR-181 i2
- NAT, firewall with SPI and DoS for better security
- Zyxel-developed OPAL for superior flexibility and faster time-to-market
- VoIP SIP protocol with 3-way conference calls

EMG5523-T50B
Dual-Band
Wireless
AC1200 Gigabit
Ethernet IAD

- Zyxel MPro Mesh® Solutions (compliant with EasyMesh standards)
- Remote management via TR-069 and TR-181 i2
- NAT, firewall with SPI and DoS for better security
- Zyxel-developed OPAL for superior flexibility and faster time-to-market
- Ecofriendly compact design for lower carbon emission

►Network extenders

WX3401-B0
Dual-Band
AX5400 Wireless
Extender

- WiFi 6 (11ax) 2x2+4x4 for superior performance and coverage
- Zyxel MPro Mesh® Solutions (compliant with EasyMesh standards)
- Remote management via TR-069, TR-098 and TR-181
- Zyxel-developed OPAL for superior flexibility and faster time-to-market
- Multiple SSIDs for various service deployment scenarios

WX3100-T0
Dual-Band
AX1800 Wireless
Extender

- WiFi 6 (11ax) 2x2+2x2 for superior performance and coverage
- Zyxel MPro Mesh® Solutions (compliant with EasyMesh standards)
- Remote management via TR-069, TR-098 and TR-181
- Zyxel-developed OPAL for superior flexibility and faster time-to-market
- Multiple SSIDs for various service deployment scenarios

WAP6807
Dual-Band
AC1200 Gigabit
Wireless Extender

- Zyxel MPro Mesh® Solutions (compliant with EasyMesh standards)
- Remote management via TR-069 and TR-098
- AP/repeater mode switch

►Active optical network

MGS3700-12C
12-port
Combo GbE
L2 Managed
Switch

- 12 combo Gigabit ports (RJ-45/SFP open slots)
- 24 Gbps non-blocking switching fabric; 17.8 Mpps forwarding rate
- Multilayer-aware (L2/L3/L4) ACL for security protection
- Front access design; external alarm block
- Supports CO-LPR (Dying Gasp); errdisable recovery trap; CPU protection
- Operating temperature: 0°C to 65°C

►Active optical network

MGS-3712F
8-port GbE
L2 Switch with
Four GbE
Uplink Ports

- 8 SFP ports and 4 combo Gigabit ports (RJ-45/SFP open slots)
- 24 Gbps non-blocking switching fabric; 17.8 Mpps forwarding rate
- Multilayer-aware (L2/L3/L4) ACL for security protection
- Front access design; external alarm block
- Supports CO-LPR (Dying Gasp); errdisable recovery trap; CPU protection
- Operating temperature: 0°C to 65°C

MGS3760-28F
24-port GbE/
Multi-Gig
L2 Switch with
Four
10G Uplink

- 16 2.5/1GbE SFP and 4 1GbE SFP and 4 1GbE combo ports
- Four 10/2.5/1GbE SFP+ uplink flexibility
- ITU-T G.8032 Ethernet Ring Protection Switching
- Future-proof with IPv6 support
- Policy-based QoS optimizes multi-service quality
- Operating temperature: -40°C to 65°C

MGS3750-28F
28-port GbE
L2 Switch

- Fully managed Layer-2 switching
- Four (4) 10GbE SFP+ uplink flexibility
- ITU-T G.8032 Ethernet Ring Protection Switching
- Support Software Stacking through standard 10GE ports
- Future-proof with IPv6 support
- Policy-based QoS optimizes multi-service quality

MGS3530-28
24-port GbE
L2 Switch with
10GbE Uplink

- Four 10GbE SFP+ uplink flexibility
- 24 100/1000BASE-TX ports
- 128 Gbps non-blocking switching fabric; 95.2 Mpps forwarding rate
- 16K MAC address table; 12 KB jumbo frame; 4K multicast forwarding table
- Front access design; external alarm block
- Operating temperature: 0°C to 50°C

MGS3520-28
24-port GbE
L2 Switch with
GbE Uplink

- 24 100/1000BASE-TX ports and 4 combo Gigabit ports (RJ-45/SFP open slots)
- 56 Gbps non-blocking switching fabric; 41.67 Mpps forwarding rate
- 16K MAC address table; 12 KB jumbo frame; 4K multicast forwarding table
- Front access design; external alarm block
- Operating temperature: 0°C to 50°C

MGS3520-28F
24-port GbE
L2 Switch with
GbE Uplink

- 24 GbE SFP open slots and 4 combo Gigabit ports (RJ-45/SFP open slots)
- 56 Gbps non-blocking switching fabric; 41.67 Mpps forwarding rate
- 16K MAC address table; 12 KB jumbo frame; 4K multicast forwarding table
- Front access design; external alarm block
- Operating temperature: 0°C to 50°C

►Active optical network ONTs

AX7501-B0
Dual-Band
Wireless AX6000
10G Fiber IAD
with SFP+

- Premium internet services via 10G WAN
- WiFi 6 (11ax) 4x4+4x4
- SFP+ supports passive, active fiber and Ethernet
- Zyxel MPro Mesh® Solutions (compliant with EasyMesh standards)
- Remote management via TR-069 and OMCI
- Zyxel-developed OPAL for superior flexibility and faster time-to-market

AM3100-B0
Gigabit Active
Fiber Gateway

- Compact size and simple bridge design for easy installation and deployment
- Remote management via TR-069 and TR-098
- Comprehensive QoS for network efficiency
- Zyxel-developed OPAL for superior flexibility and faster time-to-market

FMG3005-R20A
Gigabit Active
Fiber Bridge

- Compact size and simple bridge design for easy installation and deployment
- Remote management via TR-069 and TR-098
- Comprehensive QoS for network efficiency

►E2E OLTs

OLT1404A
1U Pizza Box
4-port GPON
OLT

- Four ITU-T G.984-compliant GPON ports; each port supports up to 128 ONTs
- Four 10G, eight 2.5G and eight 1G uplink ports
- Sophisticated OAM&P features
- Temperature-hardened for flexible installation
- Compact size and front access design for easy installation and deployment
- Zero-Touch Provisioning for fast ONT commissioning

OLT1408A
1U Pizza Box
8-port GPON
OLT

- Eight ITU-T G.984-compliant GPON ports; each port supports up to 128 ONTs
- Four 10G, eight 2.5G and eight 1G uplink ports
- Sophisticated OAM&P features
- Temperature-hardened for flexible installation
- Compact size and front access design for easy installation and deployment
- Zero-Touch Provisioning for fast ONT commissioning

IES4204
2U 4-slot
Temperature-Hardened
Chassis MSAN

- Maximum 96-port vectoring VDSL density, 80-port Gigabit Ethernet density, 32-port GPON density, or 16-port XGS-PON density
- Supports symmetric XGS-PON for residential, cloud, and enterprise services
- Flexible ACL, VLAN-aware DHCP, and anti-IP/MAC address spoofing to prevent malicious attacks
- DHCP option 82 and PPPoE IA features support versatile IP address assignment
- Temperature-hardened for flexible installation
- Zero-Touch Provisioning for fast xPON ONT commissioning

IES5206
5U 6-slot
Temperature-Hardened
Chassis MSAN

- Maximum 192-port vectoring VDSL density, 200-port Gigabit Ethernet density, 64-port GPON density, or 32-port XGS-PON density
- Supports symmetric XGS-PON for residential, cloud, and enterprise services
- Flexible ACL, VLAN-aware DHCP, and anti-IP/MAC address spoofing to prevent malicious attacks
- DHCP option 82 and PPPoE IA features support versatile IP address assignment
- Board-Level Vectoring (BLV) and System-Level Vectoring (SLV)
- Temperature-hardened for flexible installation
- Zero-Touch Provisioning for fast xPON ONT commissioning

IES5212
8.3U 12-slot
Temperature-Hardened
Chassis MSAN

- Maximum 192x2-port vectoring VDSL density, 400-port Gigabit Ethernet density, or 160-port GPON density
- Flexible ACL, VLAN-aware DHCP, and anti-IP/MAC address spoofing to prevent malicious attacks
- DHCP option 82 and PPPoE IA features support versatile IP address assignment
- Board-Level Vectoring (BLV) and System-Level Vectoring (SLV)
- Temperature-hardened for flexible installation
- Zero-Touch Provisioning for fast xPON ONT commissioning

►Active optical network

IES5212
8.3U 12-slot
Temperature-Hardened
Chassis MSAN

- Maximum 192x2-port vectoring VDSL density, 400-port Gigabit Ethernet density, or 160-port GPON density
- Flexible ACL, VLAN-aware DHCP, and anti-IP/MAC address spoofing to prevent malicious attacks
- DHCP option 82 and PPPoE IA features support versatile IP address assignment
- Board-Level Vectoring (BLV) and System-Level Vectoring (SLV)
- Temperature-hardened for flexible installation
- Zero-Touch Provisioning for fast xPON ONT commissioning

►White-box OLTs

SDA3016SS
1U Pizza Box
16-port Combo
PON SDN
Access OLT

- Disaggregated open whitebox OLT with 16 SFP+ ports with All-in-One (AIO) PON technology
- Each AIO PON port supports GPON, XGS-PON or C-PON (GPON+XGS-PON)
- ETSI-Rack compliant, 260 mm depth, 1RU height, temperature-hardened

SDA3016SS2
1U Pizza Box
16-port All-In-One
(AIO) PON SDN
Access OLT
with Timing-
Synchronization

- Disaggregated open whitebox OLT with 16 SFP+ ports with All-in-One (AIO) PON technology
- ITU-T Combo GPON, XGS-PON, C-PON (GPON+XGS-PON) and 10G Active Ethernet
- IEEE mode EPON, 10G-EPON, C-PON (EPON+10G-EPON) and 10G Active Ethernet
- Time synchronization compliant with IEEE 1588v2 PTP
- ETSI-Rack compliant, 260 mm depth, 1RU height, temperature-hardened

►E2E XGS-PON ONTs

PM7300-T0
XGS-PON SFU
with 10GbE LAN
10G

- Integrated internet services via symmetric 10G fiber
- Effortless integration into multiple scenarios
- Remote management via OMCI and TR-069
- Zyxel-developed OPAL for superior flexibility and faster time-to-market
- Comprehensive QoS for network efficiency

►E2E GPON ONTs

PMG5617-T20B2
AC1200 WiFi 5
GPON VoIP
Gateway ONT

- Supports Gigabit data access via passive fiber
- Concurrent dual-band wireless circuit design
- Remote Management via OMCI and TR-069
- MU-MIMO to maximize bandwidth utilization

PMG5617GA
Dual-Band
Wireless AC/N
GPON HGU with
4-port GbE LAN

- Supports Gigabit data access via passive fiber
- Concurrent dual-band wireless circuit design
- Remote management via OMCI and APS
- Zyxel-developed OPAL for superior flexibility and faster time-to-market

PMG5622GA
Dual-Band
Wireless AC/N
GPON HGU with
4-port GbE LAN

- Supports Gigabit data access via passive fiber
- Concurrent dual-band wireless circuit design
- Remote management via OMCI
- Zyxel-developed OPAL for superior flexibility and faster time-to-market
- RF overlay for traditional CATV video services through the GPON network

PMG1005-T20C
GPON SFU with
1-port GbE LAN

- Supports Gigabit data access via passive fiber
- Compact size and simple bridge design for easy installation and deployment
- Remote management via OMCI

EP240P
GPON PoE HGU
with 4-port
GbE LAN

- Supports Gigabit data access via passive fiber
- Compliant with IEEE 802.3af/at standard
- 30 watt output per LAN port/up to 70 watt per system
- Remote management via TR-069, Zyxel NetAtlas EMS and Zyxel OLT
- Simultaneous port-based bridge and router modes
- Temperature-hardened for flexible installation

PMG3000-D20B
Gigabit GPON
SFP-Type SFU

- Supports Gigabit data access via passive fiber
- Remote management via OMCI
- MSA-compliant SFP electrical footprint

►XGS-PON ONTs

AX7501-B0
Dual-Band
Wireless AX6000
10G Fiber IAD
with SFP+

- Premium internet services via 10G WAN
- WiFi 6 (11ax) 4x4+4x4
- SFP+ supports passive, active fiber and Ethernet
- Zyxel MPro Mesh® Solutions (compliant with EasyMesh standards)
- Remote management via TR-069 and OMCI
- Zyxel-developed OPAL for superior flexibility and faster time-to-market

►GPON ONTs

PM5100-T0
GPON SFU
with 2.5GbE LAN
10G

- Integrated internet services via symmetric 10G fiber
- Effortless integration into multiple scenarios
- Remote management via OMCI and TR-069
- Zyxel-developed OPAL for superior flexibility and faster time-to-market
- Comprehensive QoS for network efficiency

PM7000-01
XGS-PON SFP+
Transceiver
10G

- ITU-T G.9807 compliant
- Bi-directional function via a single fiber
- MSA SFP+ footprint with SC receptacle
- Commercial grade operating case temperature
- Single +3.3 V power supply with a hot-pluggable capability
- Low EMI and excellent ESD protection

►GPON ONTs

PM5100-T0
GPON SFU
with 2.5GbE LAN
10G

- 2.5G LAN port for optimized bandwidth utilization
- Compact design for flexible deployment
- Remote management via TR-069 and OMCI
- Zyxel-developed OPAL for superior flexibility and faster time-to-market
- Comprehensive QoS for network efficiency

PM3100-T0
GPON SFU with
1-port GbE LAN

- Compact design for flexible deployment
- Remote management via TR-069 and OMCI
- Zyxel-developed OPAL for superior flexibility and faster time-to-market
- Comprehensive QoS for network efficiency

PMG3000-D20B
Gigabit GPON
SFP-Type SFU

- Supports Gigabit data access via passive fiber
- Remote management via OMCI
- MSA-compliant SFP electrical footprint

►5G NR outdoor units

NR7501
5G NR
Outdoor
Router

- 3GPP Release 16 5G NR, up to 6 Gbps/450 Mbps* (DL/UL) with the support of NSA & SA mode
- Supports Sub-6 GHz & mmWave
- Supports FR1-FR2 aggregation, FR1-FR1 aggregation
- Built-in 4x4 MIMO, high-gain antennas of up to 7 dBi per element
- Standard 802.3af/at 2.5G PoE
- Remote management via TR-069/TR-181/TR-143/ web GUI
- IP67 industrial enclosure
- Zyxel Air app (iOS and Android)

NR7303
5G NR
Outdoor
Router

- 3GPP Release 15 5G NR, up to 4.67 Gbps/2.5 Gbps* (DL/UL) with the support of NSA & SA mode
- Supports FR1 NR 2CC
- Built-in 4x4 MIMO, high-gain antennas of up to 7 dBi per element
- Standard 802.3af/at 2.5G PoE
- Remote management via TR-069/TR-181/TR-143/ web GUI
- IP67 industrial enclosure
- Zyxel Air app (iOS and Android)

►5G NR outdoor units

NR7301
5G NR
Outdoor
Router

- 3GPP Release 16 5G NR, up to 3.3 Gbps/600 Mbps* (DL/UL) with the support of NSA & SA mode
- Supports FR1 NR 2CC
- Built-in 4x4 MIMO, high-gain antennas of up to 7 dBi per element
- Standard 802.3af/at 2.5G PoE
- Remote management via TR-069/TR-181/TR-143/ web GUI
- IP67 industrial enclosure
- Zyxel Air app (iOS and Android)

NR7103
5G NR
Outdoor
Router

- 3GPP Release 15 5G NR, up to 4.67 Gbps/2.5 Gbps* (DL/UL) with the support of NSA & SA mode
- Supports FR1 NR 2CC
- Built-in 4x4 MIMO, high-gain antennas of up to 9 dBi per element
- Standard 802.3af/at 2.5G PoE
- Remote management via

Service distribution network

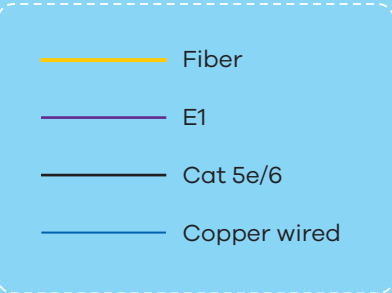
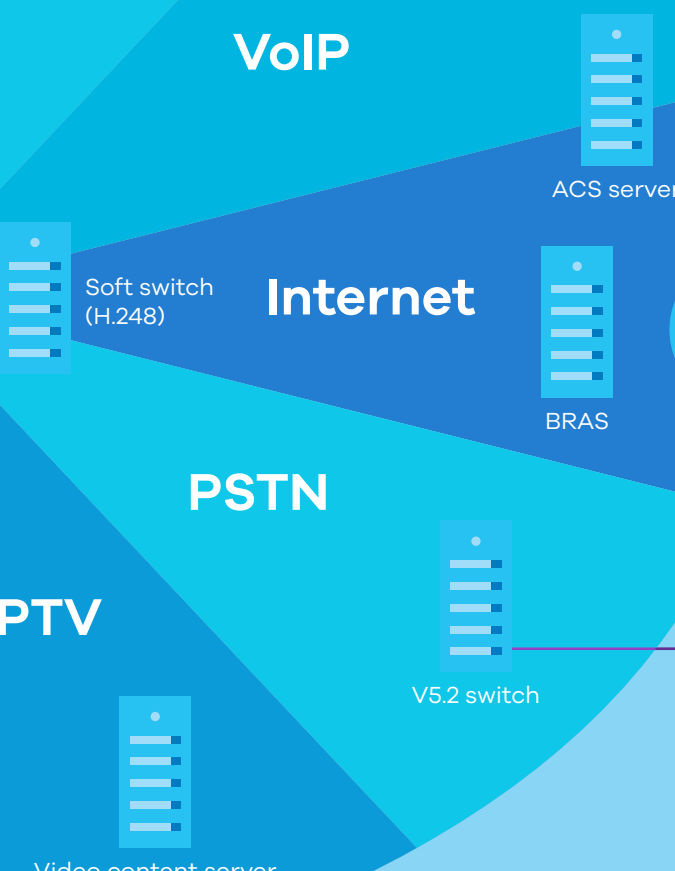
Aggregation network

Access network

Premises network



Cable



For more product information, visit us on the web at www.zyxel.com
Copyright © 2022 Zyxel and/or its affiliates. All rights reserved.
All specifications are subject to change without notice.

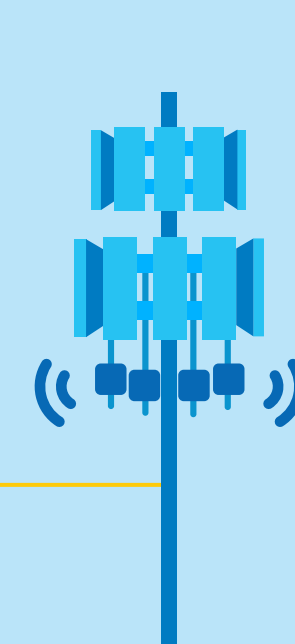


5-000-00022004 01/22

Mobile phone network

IP metro network

10G fiber ring



5G NR/4G LTE

GPON/XGS-PON

GPON

GPON

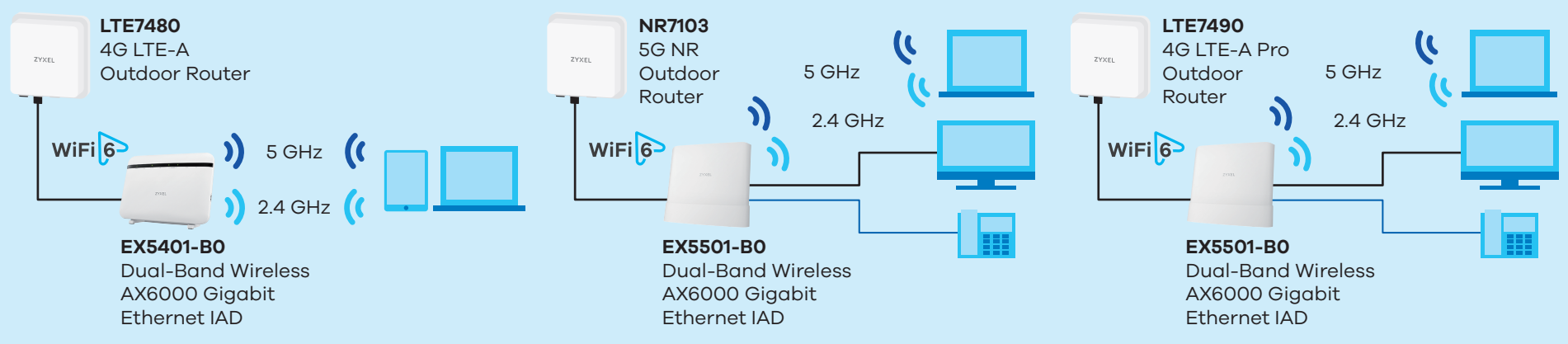
Active Ethernet

MSAN



VES1724-55C
Temperature-Hardened
VDSL2 Remote IP DSLAM

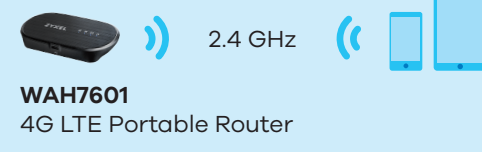
5G NR/4G LTE outdoor CPE



5G NR/4G LTE indoor CPE



5G NR/4G LTE portable router



FTTH

FTTH

VoIP

FTTB/C + DSL

FTTB

VDSL2 vectoring

GPON

Active fiber

VDSL2 vectoring

VDSL2 bonding

FTTB

G.fast

